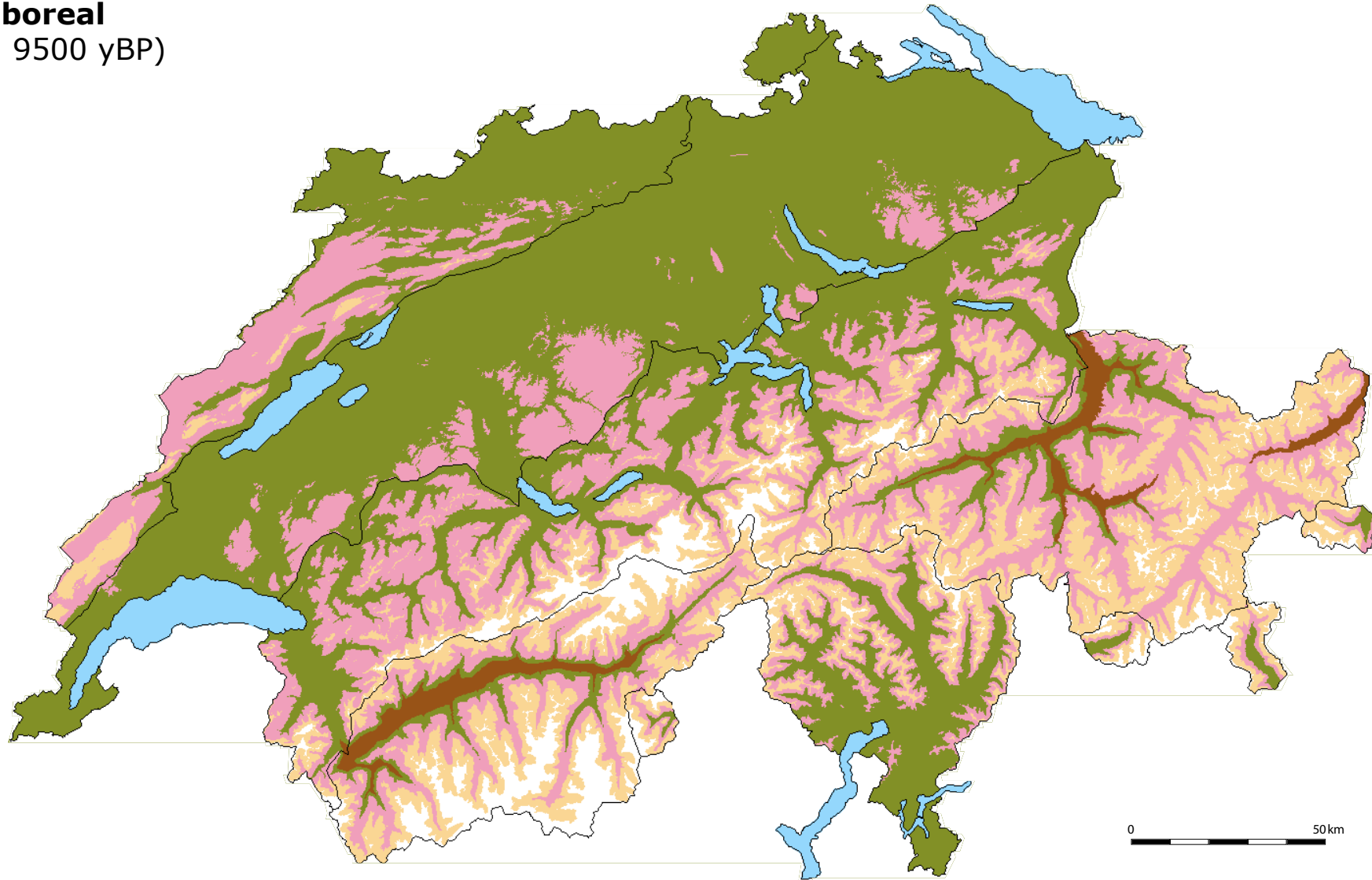


Preboreal (ca. 9500 yBP)



Dark Green: Pine-birch forest, locally common juniper. Southern Ticino: first occurrence of mixed oak forests (oak, elm, lime, maple) and ca. 9000 yBP immigration of silver fir.

Pink: Pine forest with birch, and common juniper. Central and Southern Alps: Swiss stone pine, larch and dwarf shrub heath. Eastern Prealps: Swiss stone pine.

Light Orange: Alpine grass heath, scree plant communities, rock vegetation.

White: ice, snow.

Brown: dry and steppe meadows.

Transition Boreal / Older Atlantic

(ca. 8000 – 7500 yBP)



- Colline belt:** mixed oak forest, wide occurrence of hazel. Scots pine, birch. Southern Alps: mixed oak forest, birch, pine, few hazel, many alder. Hop horn-beam, manna ash.
- Montane belt:** Hazel, mixed oak forest. Immigration of silver fir from SE and SW in Central and Eastern Prealps, mixed deciduous forest.

- Subalpine belt:** immigration of spruce in Eastern and Central Grisons. Birch, mountain pine, some hazel. Central Alps: mainly larch-Swiss stone pine forest, dwarf shrub heath. Prealps, also elm and sycamore maple.

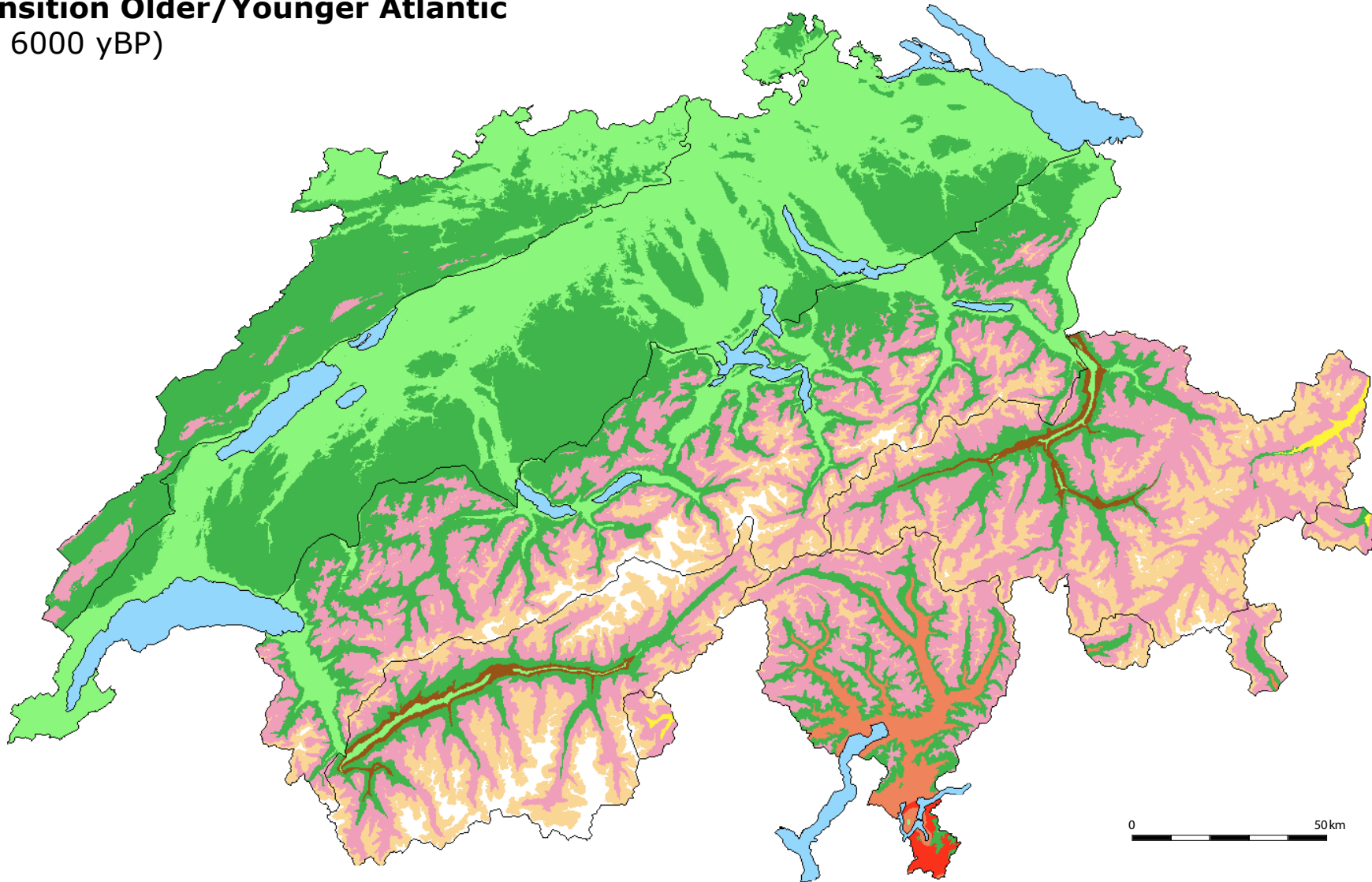
- Alpine belt:** Alpine grass heath and scree plant communities.

- Nival belt:** cryptogams, lichens, ice, snow, spruce.

- Scots pine, dry and steppe meadows.

- Scots pine, spruce, steppe meadows.

Transition Older/Younger Atlantic (ca. 6000 yBP)



Colline belt: Northern Alps: mixed oak forest (oak, elm, lime maple, ash), silver fir, downy oak, box, hazel, alder. Scots pine, riparian forest.

Colline belt: Southern Alps: oak-birch forest, birch forest, pine, alder, ash, some silver fir.

Oak-lime-maple-mixed deciduous forest with hop hornbeam, manna ash and downy oak.

From 8500–5500 yBP high forest limits at many sites. Holocene climate optimum.

Montane belt: Silver fir (few in Jura mountains), mixed deciduous forest of oak, elm, lime, maple, birch, hazel, and alder. Immigration of beech in Northeast ca. 6000 yBP.

Subalpine belt: spruce forests (east of line Gotthard-Säntis), mountain pine, some birch, locally green alder. Upper belt with Swiss stone pine and larch with dwarf shrub heath (mainly Central Alps).

Alpine belt: Alpine grass heath and scree plant communities.

Nival belt: cryptogams, lichens, ice, snow.

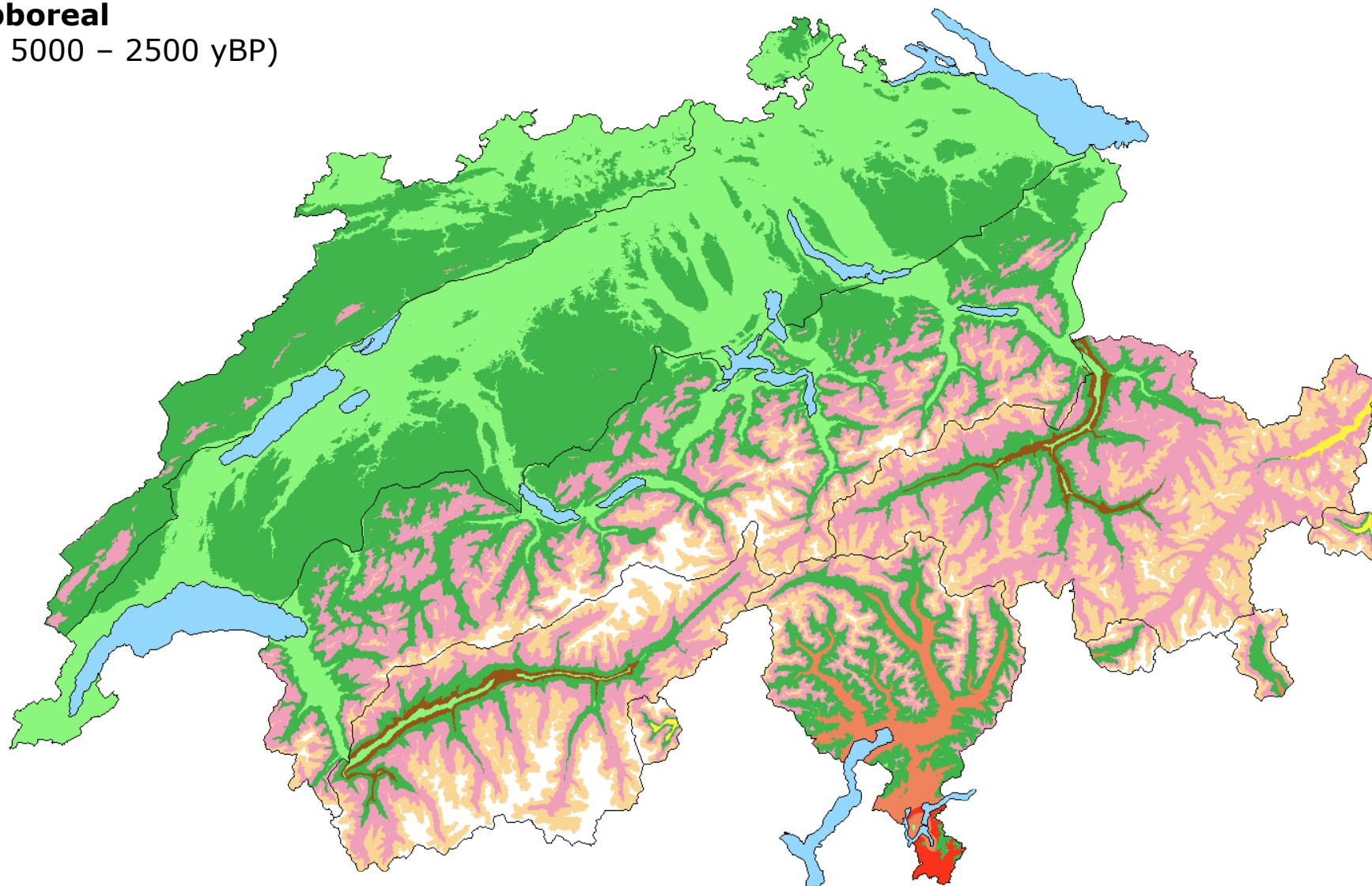
Scots pine, steppe meadows, downy oak.

Scots pine, spruce, steppe meadows.

At 6000 yBP, first human impact on vegetation (Neolithic).

Subboreal

(ca. 5000 – 2500 yBP)



Colline belt: Northern Alps: beech forest, reduction of mixed oak forest, yew, beech, Scots pine, silver fir, birch, alder, hazel, hornbeam.

Colline belt: Southern Alps: oak-birch forest, beech, hornbeam, ash.

Hornbeam and hop hornbeam, manna ash, lime, oak, downy oak.

Montane belt: beech-silver fir and silver fir forests, mixed deciduous forest, yew, some spruce forest, hazel, alder, birch, Scots pine.

Subalpine belt: spruce forest, birch, mountain pine forest, Scots pine, mountain pine, green alder, larch-Swiss stone pine forest (mostly Central Alps), dwarf shrub heath.

Alpine belt: Alpine grass heath and scree plant communities.

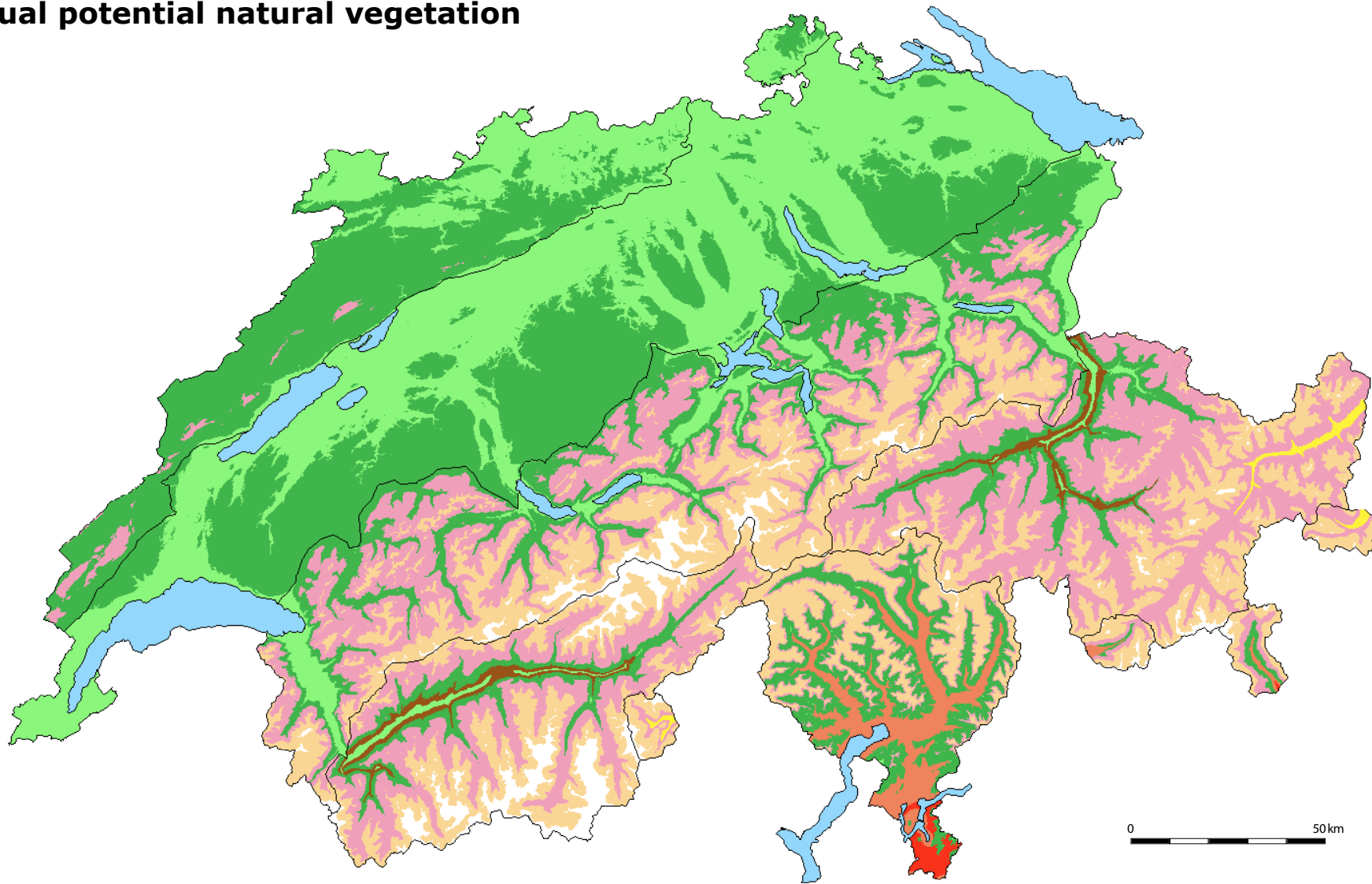
Nival belt: cryptogams, lichens, ice, snow.

Scots pine, steppe meadows, downy oak.

Scots pine, spruce, steppe meadows.

Evidence of human impact: pollen of cereals, weeds and ruderal plants.

Actual potential natural vegetation



0 50 km

Colline belt: Northern Alps: oak-lime-maple-mixed deciduous forest, oak-hornbeam forest, beech, hazel, downy oak, (Jura, Valais), pine, riparian forest.

Colline belt: Southern Alps: common oak-birch forest, sweet chestnut-birch forest, pine heath, alder.

Hop hornbeam, manna ash, lime, oak, downy oak.

Montane belt: beech, beech-silver fir, some hornbeam, silver fir and spruce forest.

Subalpine belt: spruce forest, birch, larch-Swiss stone pine forest (mostly Central Alps), mountain pine forest, mountain pine, green alder, tall perennial herbs vegetation, dwarf shrub heath.

Alpine belt: Alpine grass heath and scree plant communities.

Nival belt: scree plant communities, cryptogams, ice, snow.

Scots pine, dry-oak forest, dry and steppe meadows, (Valais, Central Grisons).

Scots pine, spruce, steppe meadows.